



AUGUST 2025

PRE-SEASON BRIEFING LIFESAVING & RESCUE SERVICES



Welcome & housekeeping

- Questions via chat and Q & A at the end of the presentation
- Meeting will be recorded and provided next week with a copy of this presentation
- Acknowledge JB



Agenda

1. Welcome & Introductions – Michael Bonnici, Director Lifesaving & Rescue Services
2. LSRS Overview – Michael Bonnici
3. Lifesaving – Nicole Cooney, Manager Lifesaving
4. Rescue Services – Simon Smith, Manager Rescue Services
5. Q & A Session
6. Meeting End



Season priorities

- SAFETY
- MEMBERS AND VOLUNTEERS FIRST / FLEXIBILITY
- RISK BASED PATROLLING
- CHANGING THE WAY WE DO LIFESAVING
- Strategic priorities: Make it easier, Blackspots, Risk, Back to basics, Work together, Lifeguards, Garie



Lifesaving & Rescue Services Committee (LSRSC) Overview

Presented by Michael Bonnici

LSRSC Executive Team



Michael Bonnici
Director
Lifesaving &
Rescue Services



Nicole Cooney
Manager
Lifesaving



Simon Smith
Manager
Rescue Services



Who is responsible for what?

Director Lifesaving & Rescue Services

- *Local Govt Liaison, Liaison with SLSNSW & other stakeholders, advocacy for Sydney Branch, Escalation Point for Lifesaving & Rescue Services*

Manager Lifesaving

- *Patrol Operations, Standards & Compliance.*
- *Manage team of Area Lifesaving Coordinators*

Manager Rescue Services

- *Management of Rescue Services Group including UAVs, Duty Officers, SR30 & RWCs*





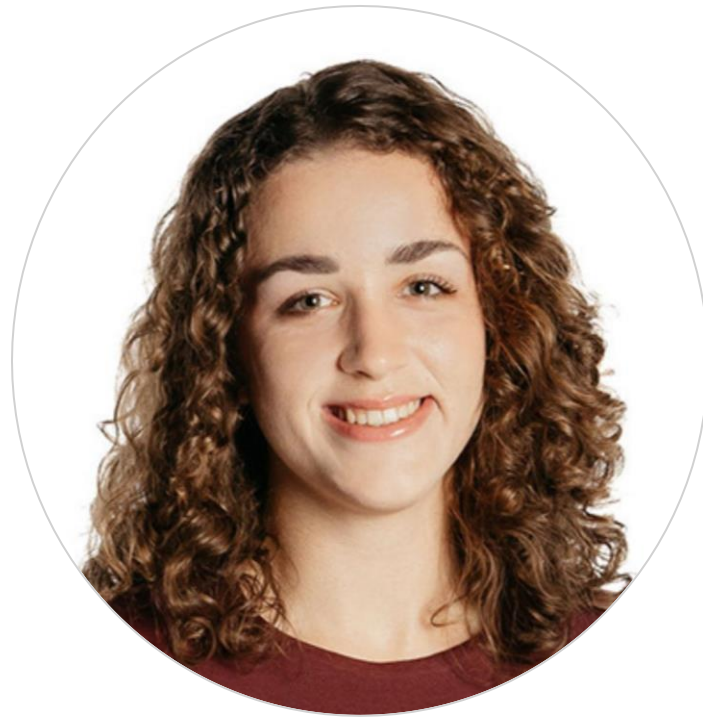
AUGUST 2025

LIFESAVING Nicole Cooney



Lifesaving – Area Lifesaving Coordinators

The Team - Your first point of contact



Emma Askham
Randwick



Amy Hanna
Waverley



Rob Short
Sutherland



Mark Wood
Royal National Park

Their role

- LSRSC representative at Club meetings
- Your voice at LSRSC meetings
- Your first point of contact for issues or feedback
- Conduct Patrol Audits once per month as per SLSNSW SOPs October - April
- Mentor, encourage and engage with Patrols and Patrol Captains



Lifesaving – Patrolling

Lifesaving Service Agreement (LSA)

- New LSAs issued for 2025 - 2027
- Simplified
 - Minimum requirements as per SLSNSW SOP PSS 3.3 Club Patrol Operations
 - Flexible patrolling – focus on **risk based patrolling**

Flexible Patrolling

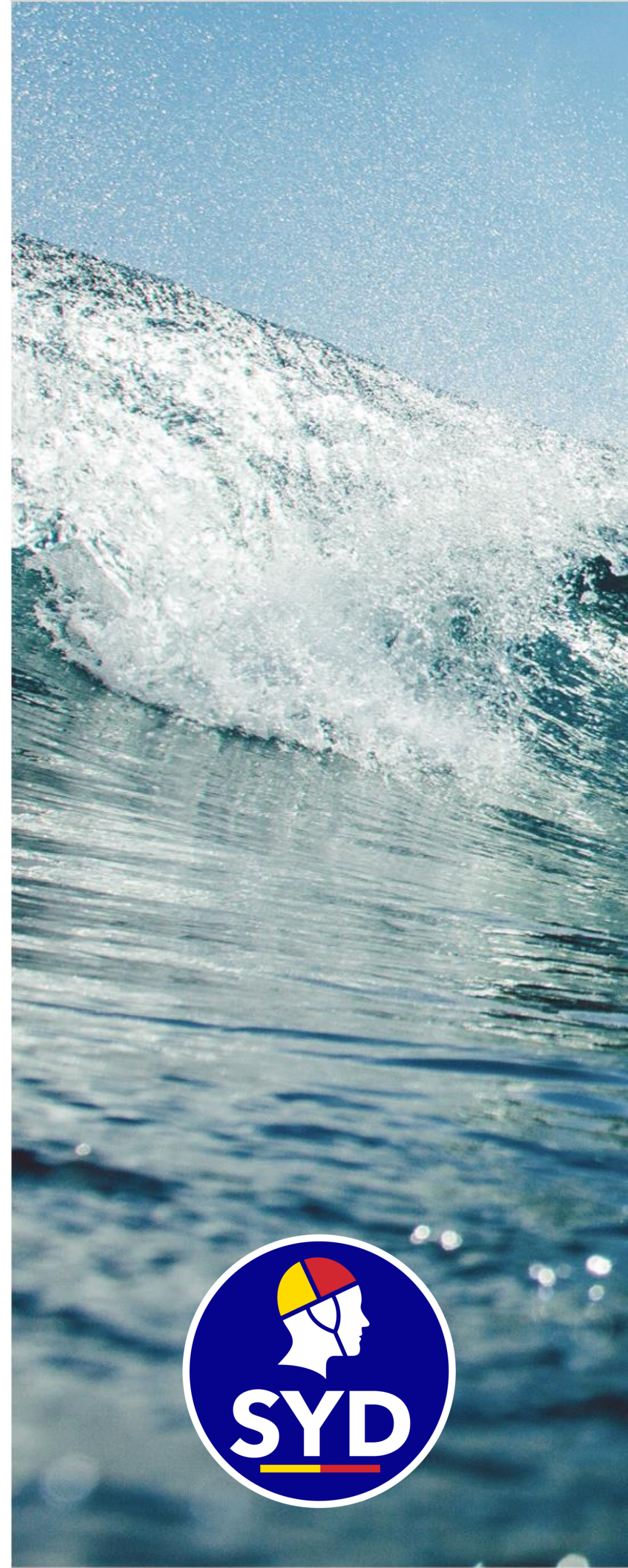
- SLSNSW utilises five patrol types
- All patrol types and minimum requirements are covered in: SOP PSS 3.3 Club Patrol Operations

<https://www.manula.com/manuals/slsnsw/pssops/jul.2023/en/topic/introduction>



The five patrol types are:

Core Patrols
1. Full Patrol
2. Partial Patrol
3. Low Patronage Patrol
4. Surveillance / Inclement Weather Patrol
5. Lifeguard Joint Patrol



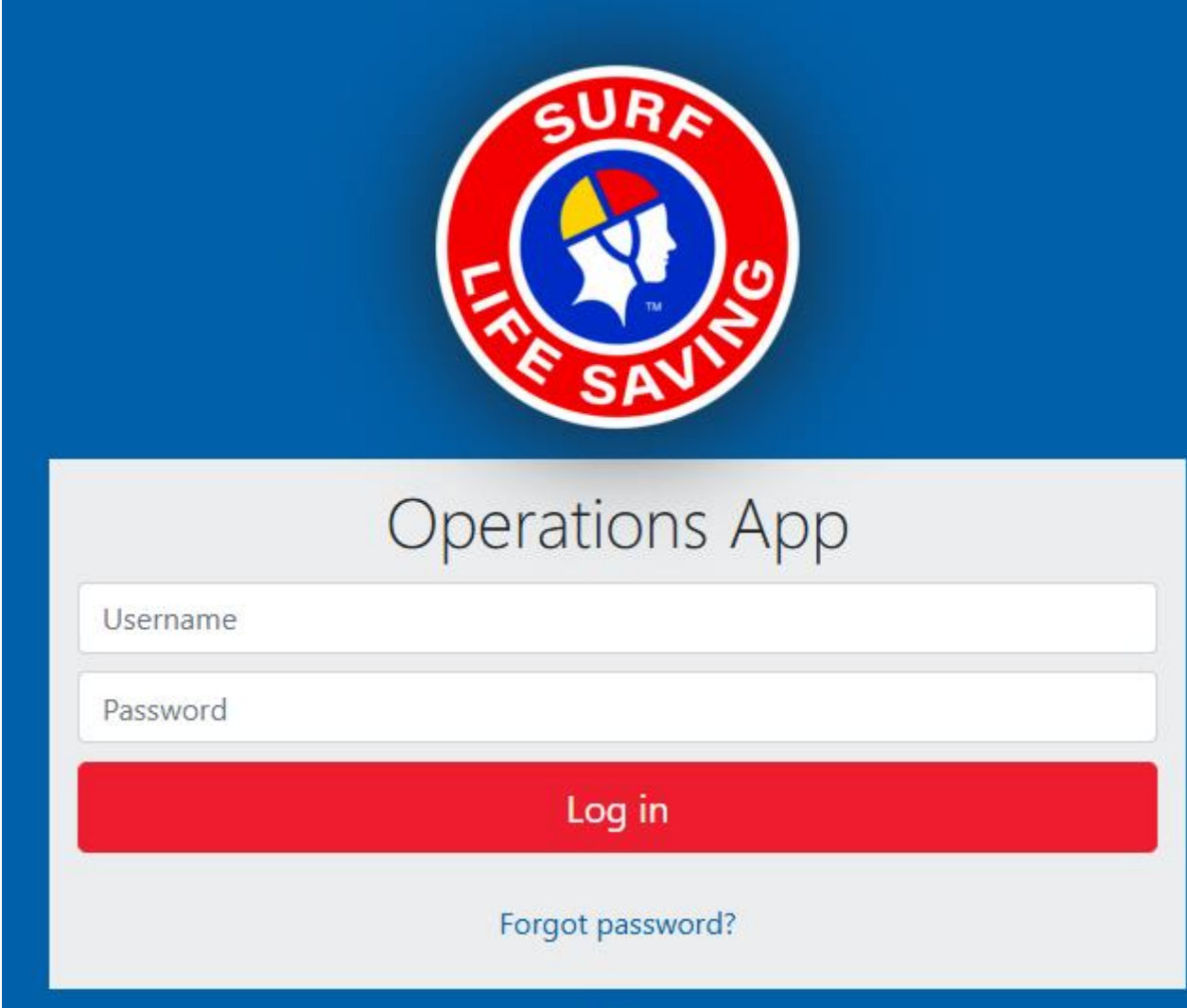
Lifesaving - Patrolling

Sign on/off

- Sign on and off via the Patrol Operations App
- Don't miss your radio check
 - have a radio dedicated to SurfCom Channel 3
- Proactive teams – vigilance at all times

Chain of Command

- PC is in charge of Patrol Operations, as per SLSNSW SOPs
- Escalation:
 - PC to notify Club Captain/President and Area Coordinator of issues
- Major issues to be escalate to Lifesaving Manager or Director of Lifesaving & Rescue Services
- Do not self-task to incidents



Operations App

Username

Password

Log in

[Forgot password?](#)



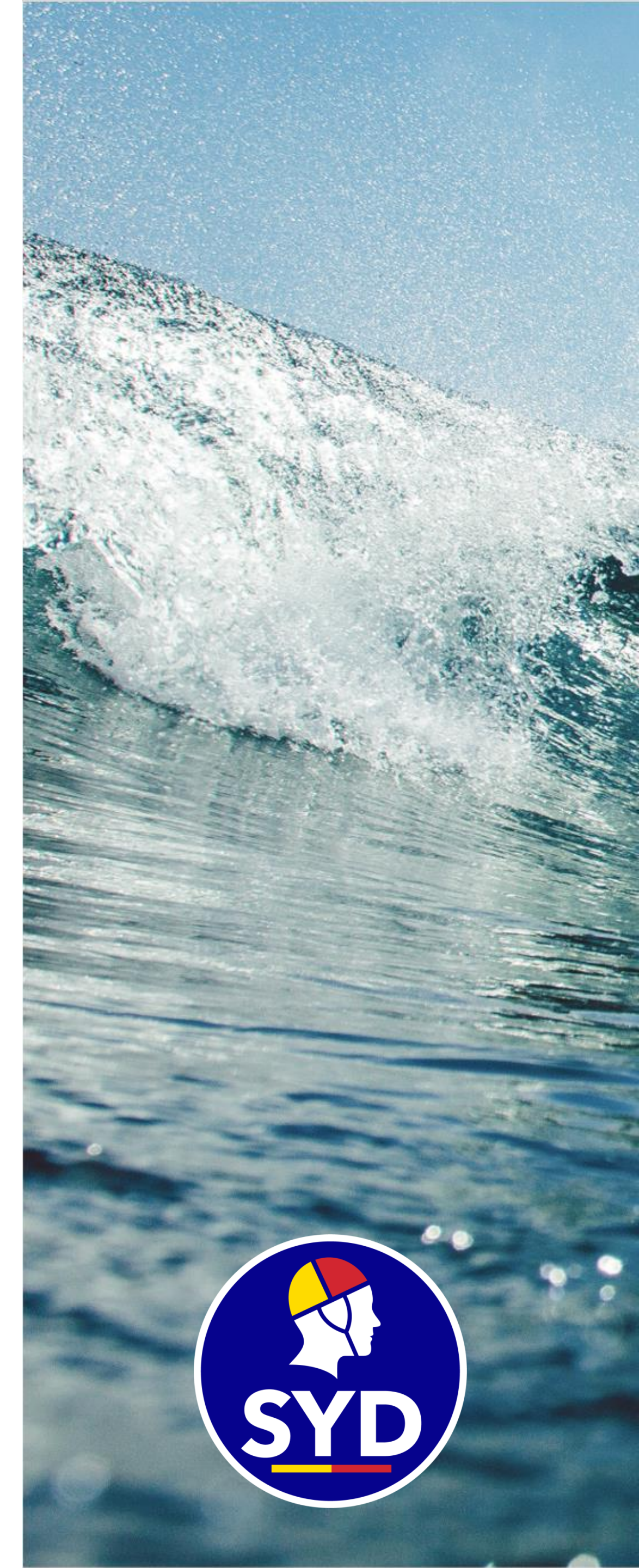
Lifesaving - Patrolling

Patrolling members

- Team in full uniform
- Ensure members complete skills maintenance by 31 December
 - Lifesaving CPR
 - Late proficiencies require approval by the Director of Lifesaving and Support Operations via the Branch Office

Inflatable Rescue Boat

- Highly visible craft - **safety is paramount**
- PFD to be worn when in craft
- Only IRB award holders to operate craft
- SLSNSW Advanced IRB Program will run in Sydney Branch
 - Opportunity to upskill existing award holders
 - Date will be advertised once confirmed



Lifesaving - Patrolling

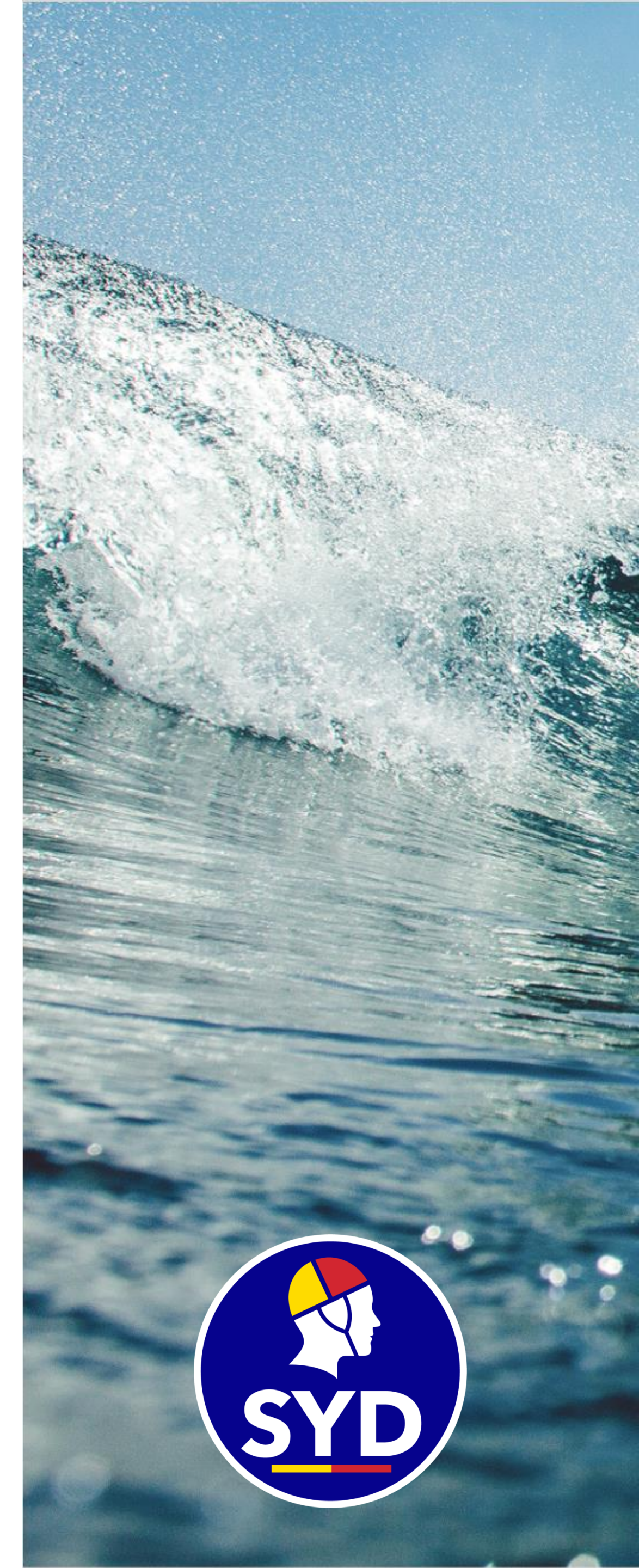
Beach Closures

- Patrol Captains should consider 'closure'
 - at any time that there is an unacceptable/ unmanageable risk to the public or
 - the lifesaving service is unable to effectively and safely perform their duties.
- Procedure in: SOP PSS 8.1 Emergency beach closure & evacuation



Patrol Extension

- Patrol Captains should consider risk to the bathing public ahead of sign off time.
- Advise the Duty Officer and SurfCom
 - As much as possible give sufficient notice of intent to extend





AUGUST 2025

RESCUE SERVICES

Simon Smith



“Rescue Services”

- Response and rescue at a patrolled location outside of designated patrolling hours (is before or after rostered patrols).
- Response and rescue outside of the designated red and yellow patrol footprint (whether within patrol hours or outside of patrol hours).



Rescue Services Team



Simon Smith
Rescue Services Manager
manager_rescueservices@sls.sydney



Doug Lucas
ORB Coordinator
orbcoordinator@sls.sydney



Andrew Horne
UAV Coordinator
uav@sls.sydney



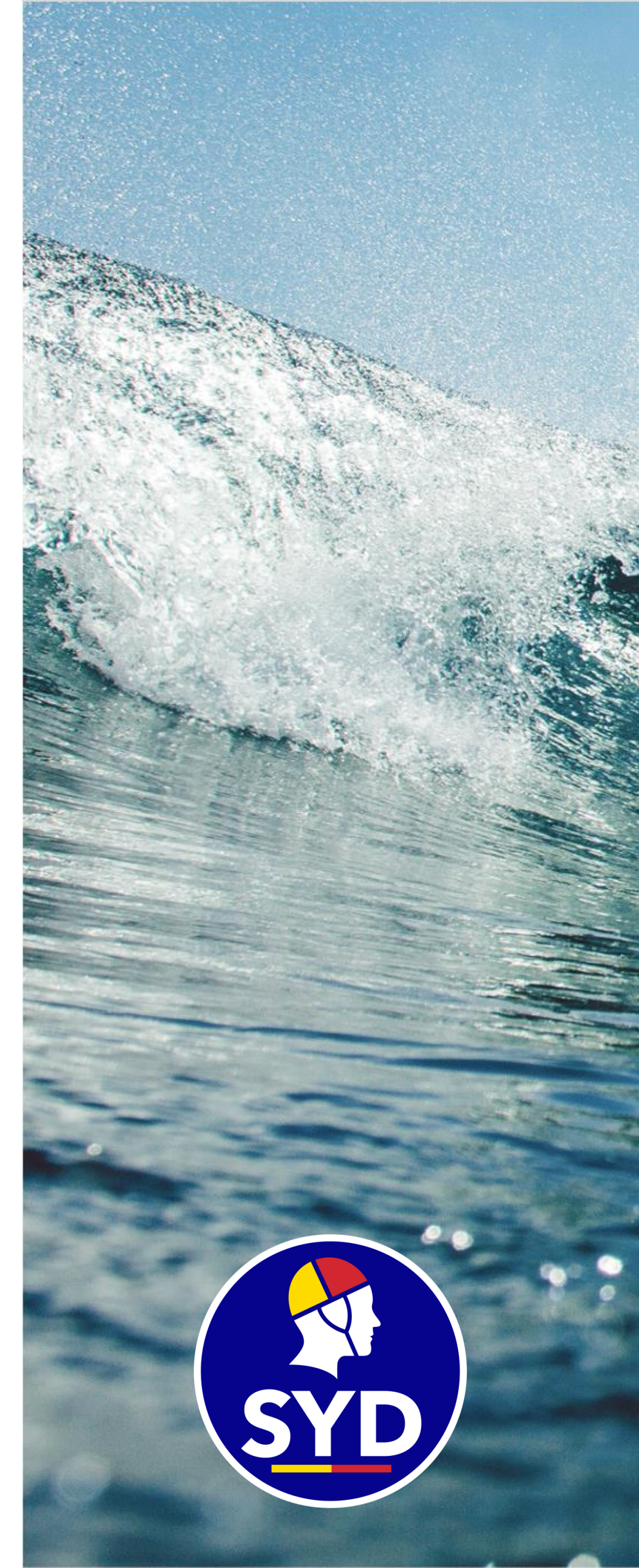
Patrick Moore
EM Coordinator
emergencymanagement@sls.sydney



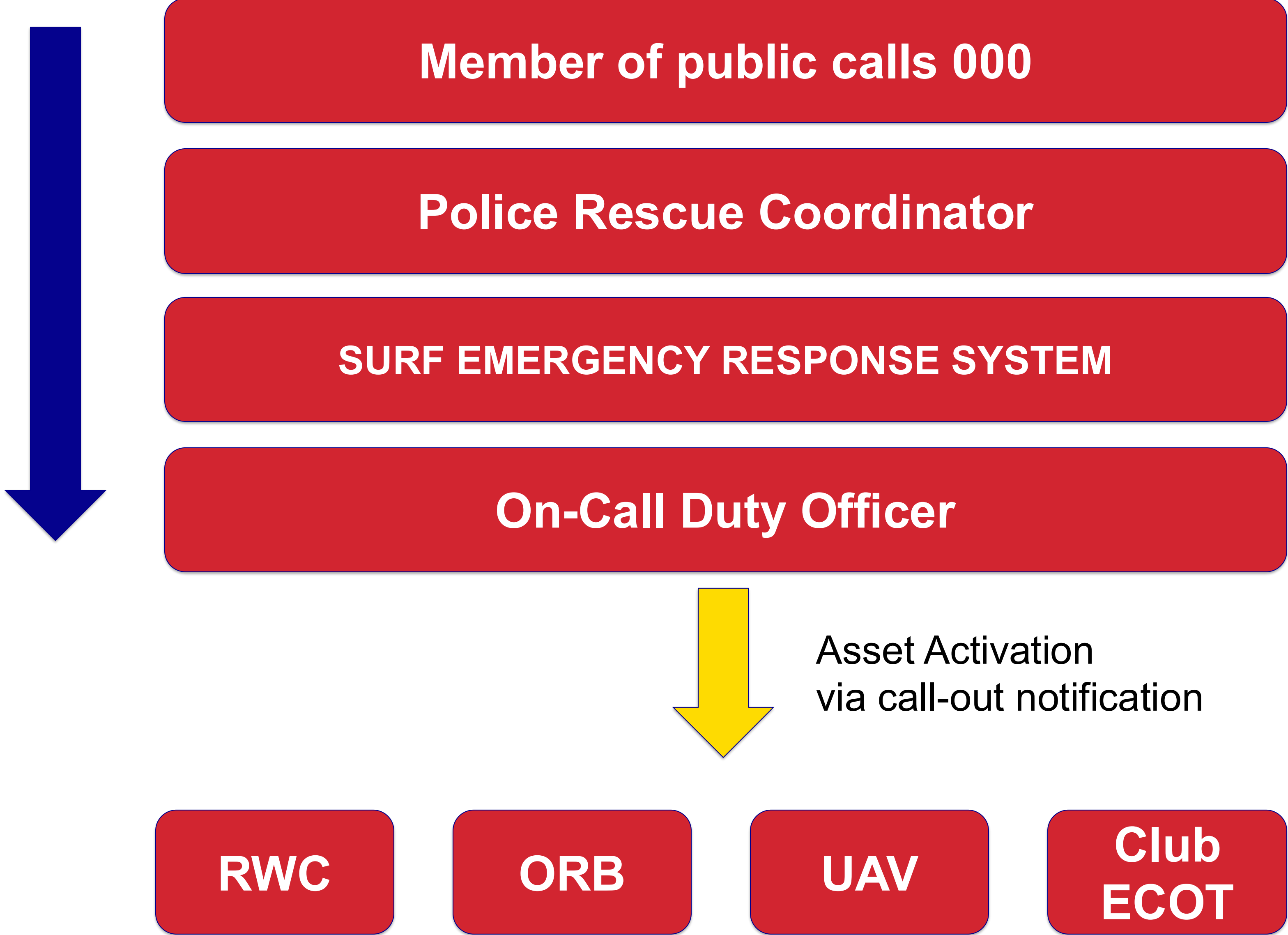
Charlie Hort
DO Coordinator
dutyofficers@sls.sydney



James McLennan
RWC Coordinator
rwc@sls.sydney



Rescue Services – Tasking pathway



Duty Officers

Responsibilities :

- Act as the Forward Commander for all Surf Life Saving assets at an emergency incident.
- Manage all SLSS requests from the Emergency Response System, SurfCom and external agencies.
- Conduct Critical Incident Debriefs for all SLSS assets involved in any emergency incident or serious injuries.
- Manage media at a major incident.
- Monitor Work Health and Safety of all SLSS personal whilst undertaking activities.

CALL SIGNS (During Patrol Hours)

- Eastern Beaches 10 & 11
- Sutherland 10 & 11



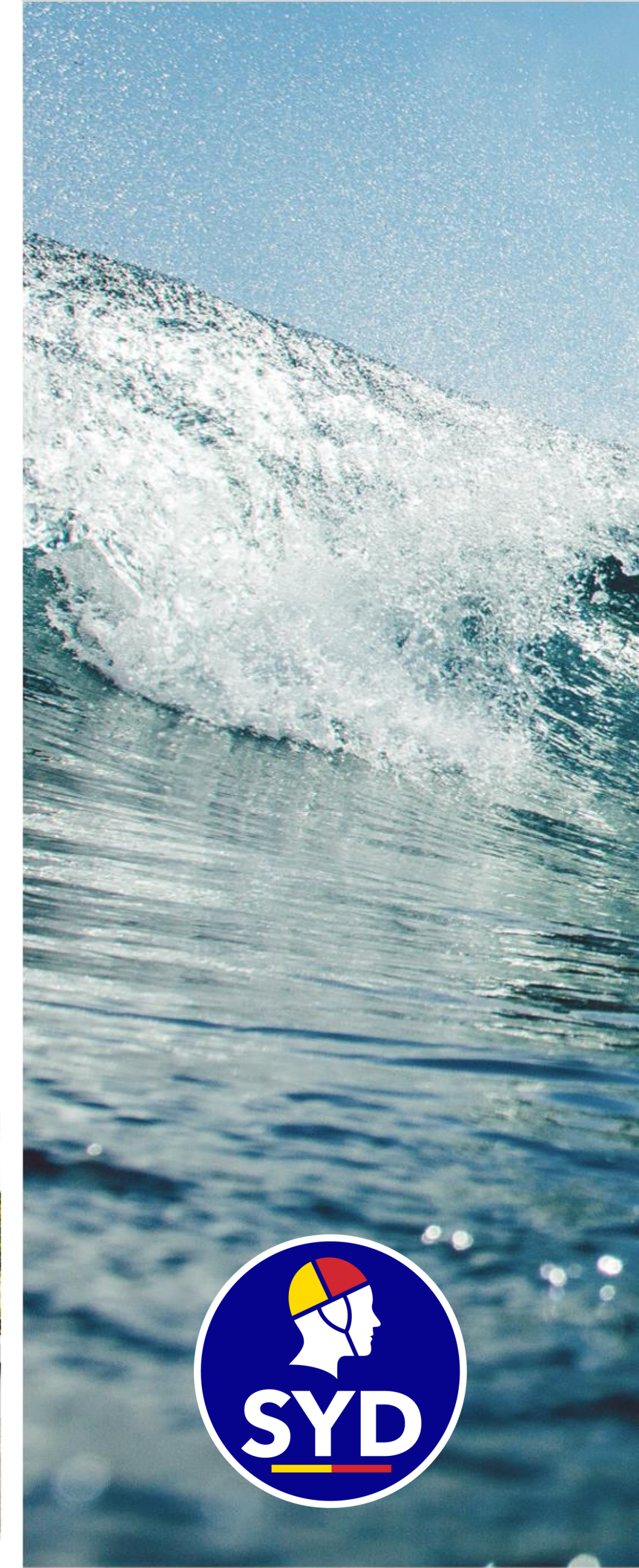
Duty Officers

Visiting Patrols

- Duty Officers wear RED shirts! They are not there to conduct patrol audits.
- Will introduce themselves to the Patrol Captain.

Required Attendance

- Incidents involving other Emergency Services (Police)
- Major member injuries where hospitalisation occurs
- Any CPR or Deceased Persons incidents where members are involved
- Incidents where multiple support operations assets are attending e.g. RWC, SR30, UAV
- Any incident where a Patrol Captain requests assistance
- Any Maritime collision that involves a Surf Life Saving asset



Rescue Services– ORB “Surf Rescue 30”

- Generally available 9am - 6pm during Patrol period
- On call daylight hours / 365 days a year
- Primary area of responsibility is from Botany Bay to Sydney Harbour
- If interested in joining please reach out to Doug Lucas (orbcoordinator@sls.Sydney)



Rescue Services – RWC

- 2 x based in **Eastern Beaches**
 - Support Ski 3 (Maroubra base), covers Randwick LGA
 - Support Ski 4 (Bondi base), covering Waverley LGA
- 3 x based in **Burraneer**
 - Support Ski 1, 2 & 5, covering the Sutherland/RNP Beaches
- Support Ski 6 available for surge capacity and events.
- Club Patrols can call on these assets to assist with preventions and increase rescue capabilities (call on Channel 3)



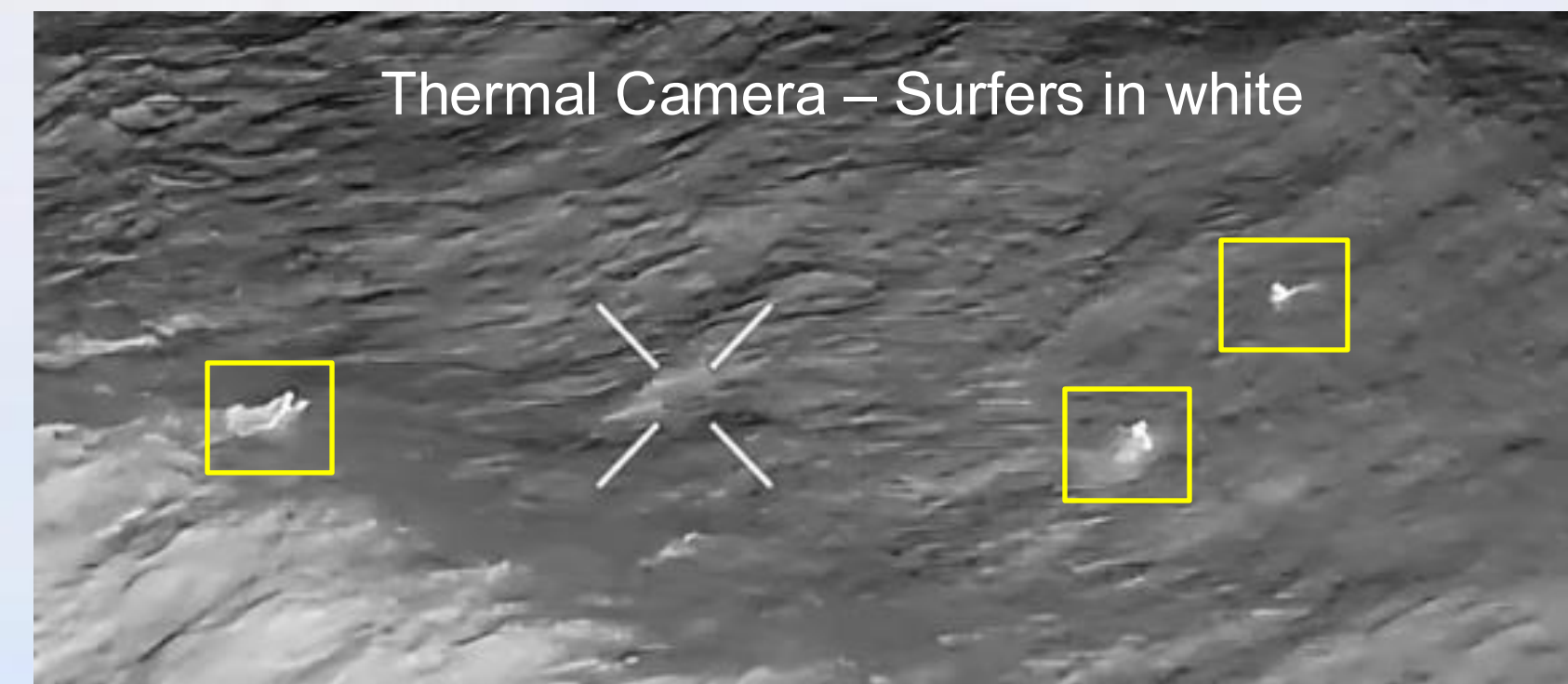
Rescue Services UAV (Drone)

Uses

- Aerial rescue surveillance of surf life saving personnel.
- Search and rescue operation in approved flight zones (land, cliff or water).
- Assessing and recording conditions for risk assessments.
- Shark or unidentified object sightings during daylight hours.
- Media footage and recordings.

This season

- Continue training to increase the number of Volunteer UAV Pilots
- Integrate UAV Pilots into beach patrols.
- Rollout of Mavic 3 Thermal UAV



Emergency Management

- SLS has been a Gazetted Emergency Service since 2018
- Emergency Management is coordinated at State level.

Responsibilities:

- Represent SLSS at (LRC) Local Rescue and Local Emergency Management (LEMC) Committees).
- Coordination of the Club ECOT working group
- Operational review and AAR lessons management processes for the branch.



Support Operations – Lifesaver 21

Lifesaver 21 can only be tasked by the State Duty Officer

Duty officers will request and seek approval if required



Member Welfare / State Welfare Officers

- Duty Officer Team will conduct a Critical OPERATIONAL Incident Debrief after all major incidents.
- Peer Support Officers will be activated by the SOC following critical incidents (Face-face support)
- Most Duty Officers are trained in mental health first aid and understand the member welfare process and can liaise with SLSNSW and the affected member.
- Members can expect to be contacted by SLSNSW following a major incident for a follow-up.
- External EAP provider is available and will be activated for members following a critical incident



Media – Major Lifesaving Incidents

- Only the Rescue Services Manager, Director of Lifesaving & Rescue Service or SLSS President can make statements regarding a major Lifesaving Incident within Sydney Branch.
- **SLNSW Media Manager**
- Deaths / Drowning's / member Injuries / accidents issues / state / national safety and funding issues
- **Branch President/ Branch Dir LSRC/ Rescue Services Manager**
- Branch issues / Stats / programs / Initiatives
- Major Rescues / Incidents
- Local Council Issues / SLS Issues
- **Club Captains**
- Club Stats / Safety Issues / events / programs
- **Patrol Captains**
- Beach Conditions / Activity / General Information



SOC / SurfCom

- Located at Belrose (SLSNSW)

Operational Hours

- Daylight Savings: 0700 – 1900
- Non-DL Savings : 0700 – 1700

Contact

- General: 02 9471 8092
- **Emergency: 02 9471 8091**

Call/Radio SurfCom for

- Requests for assistance
- Training
- Sign on and off
- Emergencies mid-week
- Report all power craft incidents
- Report all member injuries



Rescue Services – Special Event/Asset request



Request for Rescue Services Assets

Submit your event request for approval

Event Details

Please fill out all required information for your event request

Your Name *

Enter your full name

Email Address *

your.email@example.com

Club *

Enter club name

Event Name *

Enter event name

Event Type *

Select event type

Location *

Enter event location

Event Date *

22/08/2025

Start Time *

12:30 pm

End Time *

12:30 pm

Event Description

Provide additional details about your event...

Rescue Services assets

Select any assets you need for this event

Duty Officer

RWC

SR30

UAV

Submit Event Request

Reset Form

- Request for planned events (Oceanswim, Carnival, SLS activity)
- Allocation and booking of RS assets



Questions?

On behalf of SLS Sydney we wish our Clubs all the best for season 2025-2026

Contact Details

- Michael Bonnici director_lifesaving@sls.sydney
- Nicole Cooney lifesavingmanager@sls.sydney
- Simon Smith manager_rescueservices@sls.sydney

Branch Office Ph. 90190722

- Linda Perrin lifesaving@sls.sydney

Meeting Close
Thank you for your attendance

